

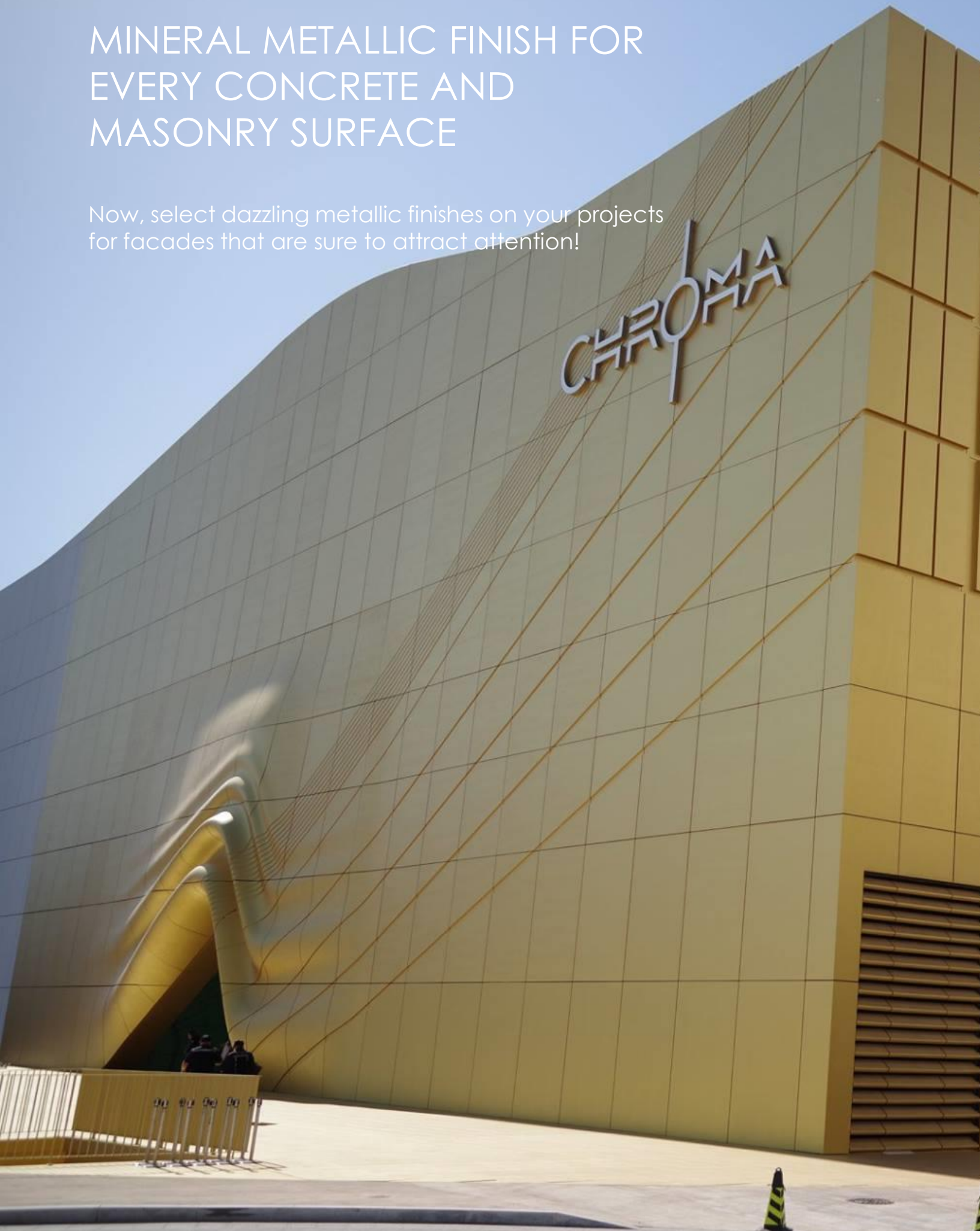


METALLIC FINISHES

MINERAL SILICATE METALLIC FINISH
SYSTEM FOR CONCRETE AND
MASONRY

MINERAL METALLIC FINISH FOR EVERY CONCRETE AND MASONRY SURFACE

Now, select dazzling metallic finishes on your projects
for facades that are sure to attract attention!





The Imprint at Paradise City, Seoul, South Korea
Architect: MVRDV, Rotterdam / Netherlands
Photo: Tec-Wall-Korea Co. Ltd.



MINERAL METALLIC FINISHES PROVIDE EXTREME
DURABILITY AND COLOR RETENTION WITH NO
TARNISHING OF METALLIC EFFECT

Color: D1003 Copper
Architect: ATC Architecture

SOL SILICATE TECHNOLOGY

A REVOLUTION IN MINERAL PAINT TECHNOLOGY

Keim's Metallic Mineral Finishes are based on sol-silicate binder technology, invented by Keim. This innovation yields our longest lasting and easiest to apply mineral paints and stains. Delivering far more longevity and permanent color than ordinary acrylic or elastomeric finishes, sol-silicate finishes balance durability with perfect structural physics.

Using only inorganic, mineral pigments, Metallic Mineral Finishes are particularly intense and color-fast to deliver decades of perfect color and protection. Metallic colors keep their original brilliance without fading or tarnishing, no matter how intense the exposure. Ideally suited to the toughest climates, coastal or alpine, Keim delivers incomparable performance and durability.

Metallic Mineral Finishes are enhanced by the natural beauty that only mineral paints can deliver. The purest metallic colors in a matte finish that never glares or looks "plastic". These metallic finishes appear more natural and never look "painted-on".

Our color-fast technology starts with the highest quality pure mineral mica pigments and mineral fillers combined with the natural U.V. resistance of sol-silicate mineral binders. Expertly blended by Keim's color technicians we offer a wide array of brilliant metallic finishes for dazzling results.

- Use on any masonry or concrete surface
- Penetrates masonry and forms irreversible bonds so finishes will never peel
- Extremely vapor permeable finishes will never blister—even in the presence of high moisture
- Ready to use for shimmering metallic effects
- Water based with no VOC's
- Exceptional durability in a water repellent finish
- Natural mineral matte metallic luster
- Choose metallic finishes from fully opaque to semi-transparent to meet any design demands

Color 1752 Or Vieilli
Z Architecture
Photo: ©Eloise Peyre





Metallic facades that are very
unique and command attention!

Above: Metallic Semi-transparent color D1001 Silver
Architect: Vera and Associés

Below: Metallic Finish in color D1001 Or
Right: Metallic Finish accents in color D1001 Or







SUSTAINABLE METALLIC FINISHES

Premium metallic paints, with all the performance benefits and added value of mineral silicate technology, now available in a dazzling array of metallic colors and design effects. Far more economical than metal cladding, these metallic finishes deliver great value combined with stunning aesthetics.

And Keim Mineral Metallic Finishes are extremely sustainable in both manufacturing and use. Keim mineral paints utilize plentiful earthen raw materials that are minimally processed requiring less energy than traditional paints in the manufacturing process. Our plants are operated with alternative energy and all water is completely recycled and reused.

And with durability measured in decades, not years like ordinary paints, Keim mineral finishes are the epitome of sustainability. Longer lasting materials require far less replacement over the lifespan of the building.

Mineral paints are easy on the environment too. Only earthen and natural materials are used with no added harsh chemicals or preservatives. And mineral paints and stains contain less than 1 gram/liter of VOC's. And our sustainability is certified by third party lab testing.

SAFE AND EASY

Mineral Metallic finishes are easy to apply without the need for specialized equipment or experience. All are water base and contain no harsh chemicals or allergens, for the safety and health of applicators. Like any ready-to-use paint, application is by brush, roller or airless spray. No added labor costs for these beautiful and head-turning finishes.

Above: Metallic Mineral Paint, color D1002
Steven Holl Architects, New York
Photo: Paul Warchol



Metallic Mineral Finish Color D1753 Kenya
BELLECOUR Architects
Photo: ©Philippe Caumes

EXPERTLY CRAFTED DELIVERING THE ABSOLUTE HIGHEST QUALITY

German engineering and technology are combined with hand crafted precision in the U.S., these metallic finishes are no ordinary or mass-produced paint. Select raw materials are combined using exacting processes honed over 135 years. Technical diligence only begins to explain our relentless commitment to technological and manufacturing excellence as demonstrated by our ISO 9001:2015 and ISO 14001:2015 certifications.

MINERALS LAST FOR GENERATIONS

The oldest buildings of mankind are made of stone because minerals are stable and very weather resistant. No wonder mineral paints from KEIM are so long lasting. No spalling, flaking or peeling from moisture or freeze thaw. Mineral silicate finishes age gracefully for decades, lasting many times longer than acrylic or latex paints.

PERMANENT BONDS WITH THE SURFACE

KEIM invented the sol-silicate binder that penetrates and forms insoluble bonds within masonry surfaces as well as having permanent adhesion to latex and acrylic previously painted surfaces. Metallic Mineral finishes are the ideal high-end masonry façade solution.

MINERAL PAINTS ARE VERY VAPOR PERMEABLE

Mineral finishes are extremely vapor permeable, at a minimum of 77perms, to allow moisture vapor, that can accumulate in the building envelope, to freely escape without damaging the finish. Mineral finishes will never blister or peel even in high moisture environments.

NATURALLY U.V. RESISTANT AND STABLE

Ordinary acrylic and latex paints lose their elasticity over time when exposed to U.V. and weathering. Artificial sun-screens must be added to these paints to slow-down this aging process. Keim's sol-silicate mineral binders are inert like stone and absolutely U.V. stable. These finishes do not degrade, even with the harshest exposure. Metallic Mineral Finishes will last for decades, not years, and never lose their brilliance.

At left: 22 stunning metallic colors available. Custom metallic blends are also available.



METALLIC FINISHES

PROTECTION AND DAZZLING BEAUTY

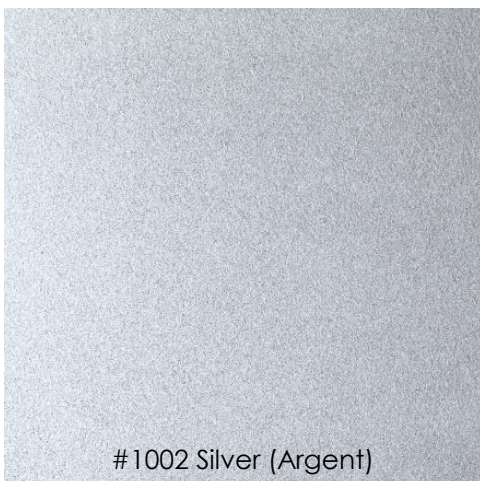
Mineral metallic finishes can add excitement or elegance to your next project. The iridescent colors change throughout the day as sunlight traces across the facade. Subtle and striking in low light, these metallic finishes absolutely “gleam” in sunlight. But the mineral matte finish never creates a blinding glare, rather it radiates the sunlight across the metallic surface for a glowing appearance.

Metallic Mineral Finishes provide a depth of color and metallic luster ideal for high-end projects, both indoors and on exterior facades.

COLOR WITH MOVEMENT

Mineral metallic finishes appear to morph with changes in ambient light sources. Sparkling mica pigment, from the earth, is a foil for the rich metallic colors which only use mineral oxide pigments to ensure ultimate U.V. stability.

Combining the unique mineral mica pigments with the crystal-clear mineral binder of mineral paints allows for a most expressive metallic appearance. The glint of rare metals is perfectly paired with a pure crystalline matrix surface—metallic pigments are left to shine naturally and never muted. Ordinary acrylic paints can mute the natural beauty of metallic pigments by their milky nature.





DECORATIVE METALLIC EFFECTS ARE
EASY TO ACHIEVE WITH KEIM METALLIC
MINERAL FINISHES

Metallic Mineral Stain Color D1001 Gold
Architect: PADW
Photo: ©C. Septet

METALLIC MINERAL FINISHES

KEY FEATURES

- Use on any type of concrete or masonry surface—penetrates and chemically fuses for permanent adhesion
- Glistening metallic effects that won't fade or tarnish
- Extremely durable and weather resistant
- Very vapor permeable—regulates moisture in substrate and will never blister or peel
- Environmentally friendly and sustainable
- Outstanding physical properties—easy to apply
- Noncombustible—won't add fuel or noxious smoke in case of fire
- Use on new or old, even previously painted concrete and masonry
- Economical alternative to metal cladding

METALLIC MINERAL FINISHES

USE	To protect and decorate interior or exterior new or aged concrete and masonry where a dynamic metallic finish is desired and long-term durability is required. Use as fully opaque metallic finish or choose to dilute to desired semi-transparent metallic effect.
TECHNOLOGY	Sol-silicate Binder combined with only earthen mineral fillers and pigments
SYSTEM: Full Metallic Effect (opaque)	
Base coat interior*	Optil Interior Sol Silicate Paint
Base coat exterior*	Soldalit Exterior All-Surface Paint
Metallic coat	Metallic Mineral Finish
Metallic coat	Metallic Mineral Finish—a second coat may be desired to produce more dazzling metallic effect
SYSTEM: Semi-transparent Effect	
Base Coat	Sol Silicate Dilution (clear pretreatment)
Second coat	Metallic Mineral Finish (diluted to desired stain effect)
Finish coat (if needed)	Metallic Mineral Finish (diluted to desired stain effect)
TECH SPECS	
Vapor Permeability	77--86 Perms per ASTM E96
Accelerated Weathering	2016 hours no change per ASTM G154
Wind-driven Rain (paint)	Passes ASTM E514 with no leaking
Mildew Resistance	Passes per ASTM D3273/D3274
Alkali Resistance	No visible change at 24 hours per ASTM D1308
VOC	<1g/liter per ASTM D6886
Fade Resistance	A1-- No color change after 4 years per Fb-Code according to BFS technical bulletin No. 26

*Base coat may be used for economics, but is not required, to provide a "ground" color for metallic finishes. A compatible color should be used.

Cover Photo: Color 1752 Or Vieilli
Z Architecture
Photo: ©Eloise Peyre



KEIM MINERAL COATINGS OF AMERICA, INC
10615 Texland Boulevard, #600 / Charlotte 28273
704.588.4811 / toll free 866.906.5346
KEIM.com

KEIM. COLORS FOREVER.