



Concretal W
Sol Silicate Paint for Concrete
Color: White
Architect: Johnston Marklee
Photo: courtesy of Johnston Marklee



CONCRETAL® W

MINERAL SOL SILICATE PAINT FOR CONCRETE

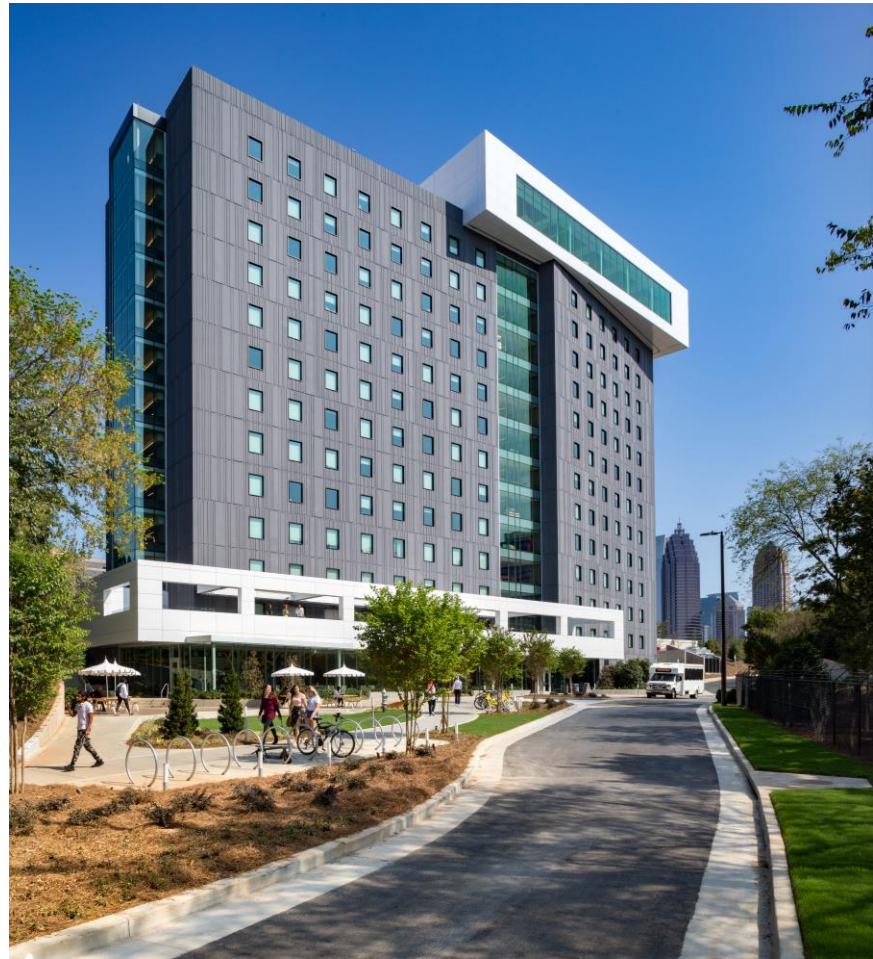
THE MOST COMPATIBLE PAINT FOR LONGEST LASTING PROTECTION OF CONCRETE

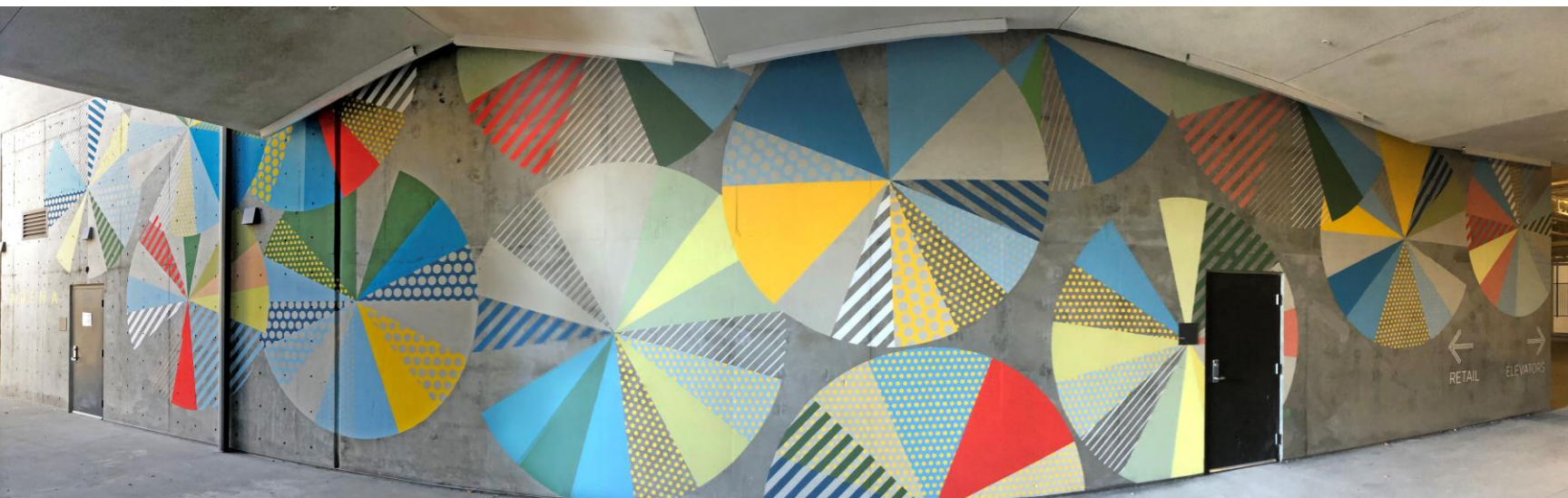
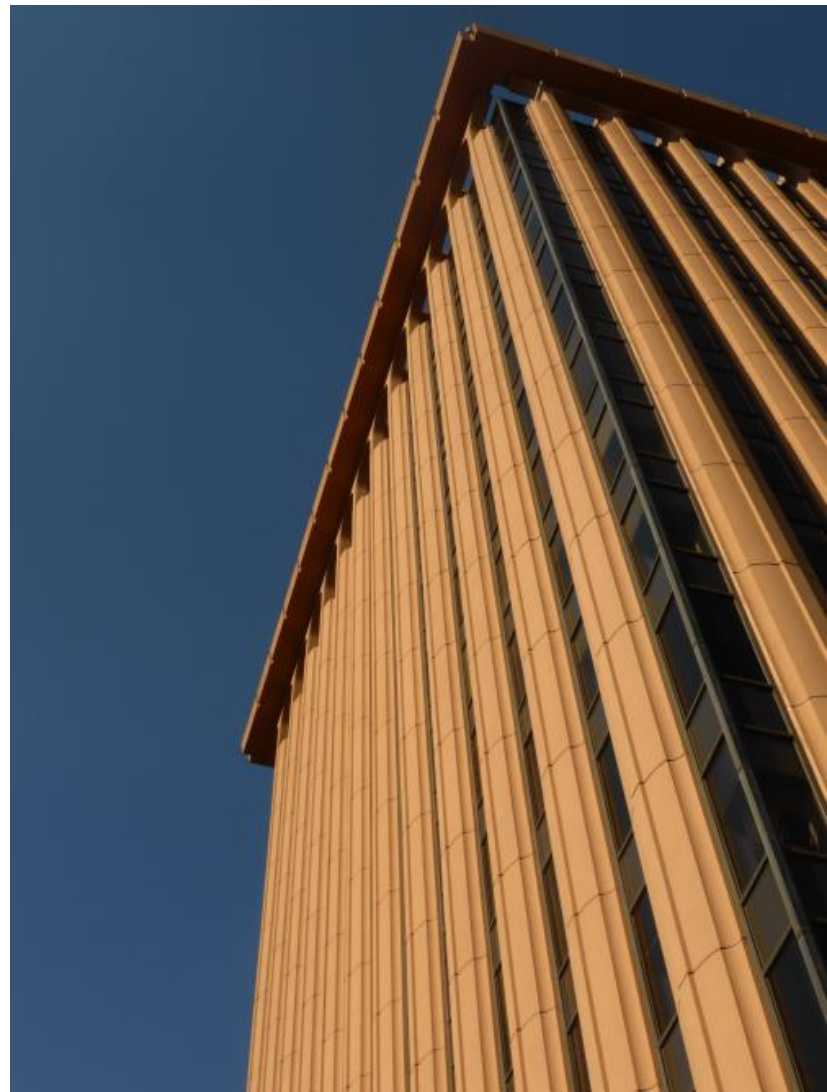
- PENETRATES: Fuses with concrete to become part of the surface
- COMPATIBLE: Raw materials and physical properties are very similar to concrete
- STRENGTHENS: Silicification process strengthens and consolidates concrete surface
- VAPOR PERMEABLE: Very vapor permeable--never blisters or peels
- ALKALI RESISTANT: Similar pH to concrete—apply to fresh concrete (7 days old)
- COLOR-FAST: Color shades will not change for decades
- REDUCES DIRT PICK-UP: Soiling of concrete is reduced with antistatic properties due to non-thermoplastic binder
- WEATHER RESISTANT: Water repellent and resistant to weather, pollution and acid rain
- ECONOMICAL: Long service life and ease of repaint lead to lower costs
- ENVIRONMENTALLY SOUND: Purely mineral, no chemicals or pollutants
- PRESERVES CONCRETE APPEARANCE: Concrete texture and aesthetics are enhanced, but not hidden by natural mineral matte finish



Concretal W in white and various colors

CONCRETAL[®] W COLORS GUARANTEED NOT TO FADE





Concretal W mineral colors

Natural appearance, never looks “painted” on





CONCRETAL® W

PURELY MINERAL COLORS THAT WILL NOT FADE

Formulating with silica sol and mineral silicate binders coupled with only mineral oxide pigments, ensures both compatibility with concrete, and a lifetime of color. Natural earthen pigments are inert and color stable to stand the test of time, just as Mother Nature intended. Concretal W can be applied in a smooth finish for concrete that is not in need of upgrading, or a sanded finish when the concrete surface needs some improvement in texture.

At left is a visual representation of Concretal W smooth finish. The penetrating nature never masks minor imperfections, cracks and blow-holes, allowing the natural "feel" of the concrete to remain, even with a new color and protective finish. And the mineral matte nature of Concretal W looks so natural, it even darkens when wet from rain, just like natural concrete.



CONCRETAL® W

WATERPROOF PROTECTION,
LONG-LASTING BEAUTY

When Foster and Partners were planning the new PGA Tour Headquarters, the desire to balance concrete's rawness with a more refined aesthetic was top of mind. And being on a new man-made lake in Florida, the concrete required water-repellent protection. Three story supporting concrete columns throughout are finished with Concretal W for lasting beauty and protection.

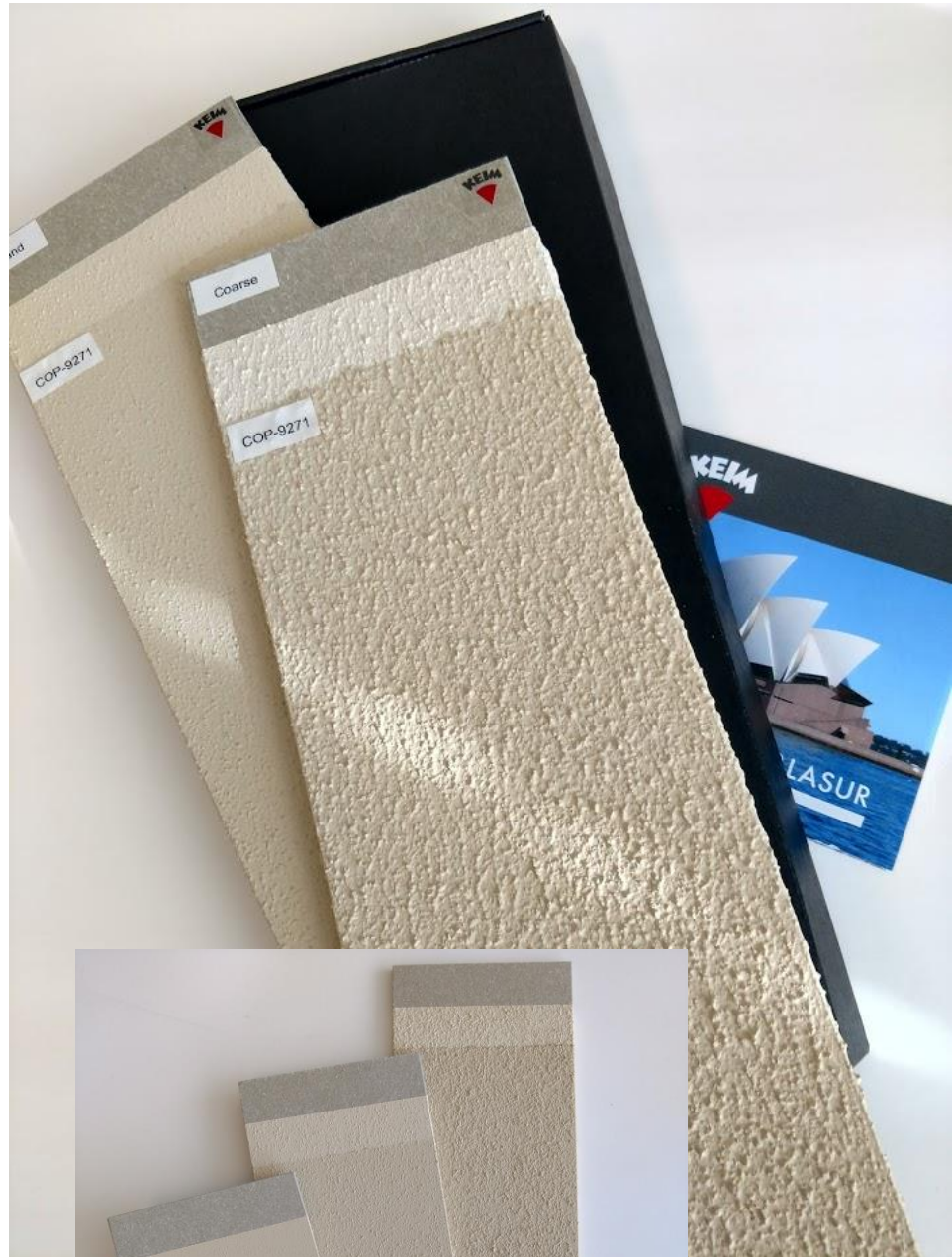


CONCRETAL[®] FINISHES A TEXTURE FOR EVERY PROJECT

Sometimes, even new concrete requires some additional “texture” to elevate it to a more uniform appearance. Aged and patched concrete too, often requires the application of subtle texture to minimize the appearance of patches or rough surfaces. Concretal finishes are available in three unique textures to meet most any need.

- Smooth
- Sand
- Coarse

Textures are applied as the base layer and followed by a smooth color coat for maximum performance. A color contrast is used to ensure a full two coat application is achieved without “holidays”.







KEIM MINERAL COATINGS OF AMERICA, INC
3935 Perimeter West, #100 / Charlotte, NC 28214
704.588.4811 / toll free 866.906.5346
KEIM-USA.com
info@Keim.com

©2022 Keim Mineral Coatings of America, Inc.

KEIM. COLORS FOREVER.